

HOME BASE LIVING

2197 PEASLEY ST
PORT CHARLOTTE FL 33948



WE HAVE CHANGED THE WAY YOU WATCH BASEBALL!

32 UNITS + CLUB HOUSE
20 MULTI-FAMILY UNITS - 12 TOWNHOMES
3.3 ACRES

HOME BASE LIVING IS LOCATED IN A 3.3 ACRE MIXED-RESIDENTIAL PROJECT FEATURING 20 MULTI-FAMILY CONDOS, 12 TOWN HOMES AND A STATE-OF-THE-ART COMMUNAL CLUBHOUSE. LOCATED IN THE HEART OF CHARLOTTE COUNTY, ALONG THE INCREDIBLY BEAUTIFUL CHARLOTTE SPORTS PARK, WE OFFER A UNIQUE LOCATION FOR THOSE LOOKING TO LIVE IN A NEW AND VIBRANT COMMUNITY, WITH EASY ACCESS TO THE REST OF THE CITY.

WE ARE OFFERING OUR CUSTOMERS A MORE EFFICIENT AND SUSTAINABLE LIVING EXPERIENCE. WITH OUR IMPRESSIVE PANORAMIC VIEW OF THE SPORTS FACILITY AND GREEN BUILDING TECHNIQUE, HOME BASE LIVING OFFERS SOMETHING NO OTHER LOCATION IN PORT CHARLOTTE CAN OFFER.

E-HOME FEATURES

- ENERGY EFFICIENT
- SAFE & SECURE
- FIREPROOF
- TERMITE PROOF
- ECOLOGIC
- ACOUSTIC

AMENITIES

**EUROPEAN- STYLE
ITALKRAFT CABINETRY IN KITCHENS AND BATHS**

DESIGNER PLUMBING FIXTURES
CROSSFIT TRAIL
WELLNESS CENTER (SAUNA, TURKISH BATH, RESTING AREA)
COMMUNITY POOL
GATED COMMUNITY
SUNDECK- ROOFTOP
ELEVATOR (FOR CONDOS)
STORAGE

VISIT HOMEBASELIVINGFL.COM - CONTACT PABLO ARCE (786)5640841

HOME BASE LIVING

2197 PEASLEY ST
PORT CHARLOTTE FL 33948

CONDO A

2 2

1,055 SF + 279 SF BALCONY

CONDO B

2 2

1,055 SF + 300 SF BALCONY

CONDO C

3 2

1,269 SF + 300 SF BALCONY



TOWNHOME A

2 2 2

1,459 SF + 266 SF TERRACE

TOWNHOME B

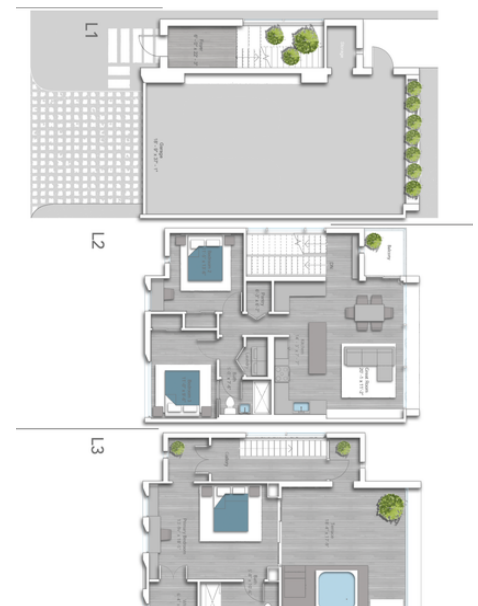
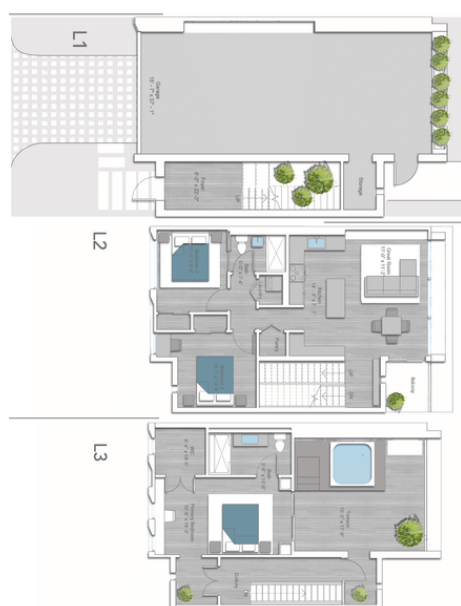
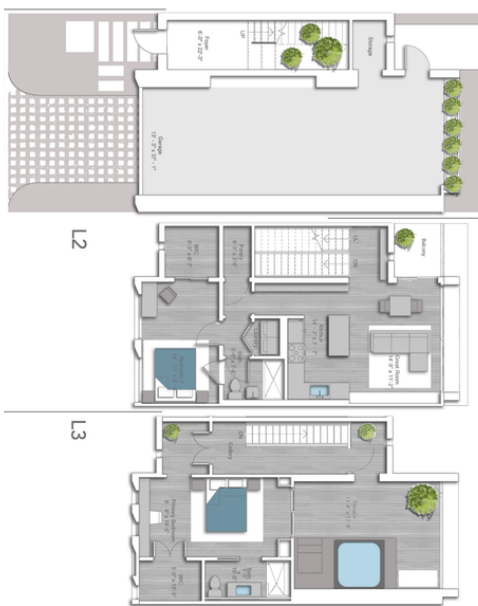
3 2 2

1,591 SF + 305 SF TERRACE

TOWNHOME C

3 2 2

1,789 SF + 356 SF TERRACE



ORAL REPRESENTATIONS CANNOT BE RELIED UPON AS CORRECTLY STATING THE REPRESENTATIONS OF THE DEVELOPER. FOR CORRECT REPRESENTATIONS, MAKE REFERENCE TO THE DOCUMENTS REQUIRED BY SECTION 708.503, FLORIDA STATUTES, TO BE FURNISHED BY A SELLER TO A BUYER OR LEASE.

VISIT HOMEBASELIVINGFL.COM - CONTACT PABLO ARCE (786)5640841



EFFICIENT
DEVELOPMENT GROUP

CONTACT
PABLO ARCE
(786)5640841

EFFICIENTDEVELOPMENTS.COM

ABOUT OUR HOMES

INCLUSIONS

CAREFULLY THOUGHT OUT SPACIOUS FLOOR PLANS
HIGH IMPACT FLOOR TO SEALING WINDOWS
UNIQUE WOOD-STYLE FLOORS THROUGHOUT
FRONT LOAD FULL SIZE WASHER & DRYER
BUILT-IN SPACE MAXIMIZING CLOSETS
DIGITAL PROGRAMMABLE THERMOSTATS
KEYLESS ENTRY
DESIGNER LIGHTING FIXTURES
METAL ROOFS
GALVANIZED STEEL FRAME
HURRICANE PROTECTION ON SLIDING DOORS AND WINDOWS
TERMITE-PROOF
FIRE RESISTANT
6 MONTHS CONSTRUCTION SCHEDULE.

ABOUT OUR KITCHENS

QUARTZ COUNTER TOPS
ITALIAN CABINETRY WITH UNDER CABINET LIGHTING
ISLAND AREA FOR ENTERTAINMENT
TILE BACKSPLASH
ITALIAN CABINETRY PANTRY
MULTI-FEATURE KITCHEN FAUCET
STAINLESS STEEL HIGH EFFICIENCY APPLIANCES

ABOUT OUR BATHS

DESIGNER VANITIES WITH LIGHTED MIRRORS
FULL HEIGHT PORCELAIN WET WALLS IN SHOWERS & TUBS
FRAMELESS GLASS SHOWER ENCLOSURES
RAIN SHOWERS & HAND-HELD SHOWERS IN MASTER BATH

ORAL REPRESENTATIONS CANNOT BE RELIED UPON AS CORRECTLY STATING THE REPRESENTATIONS OF THE DEVELOPER. FOR CORRECT REPRESENTATIONS, MAKE REFERENCE TO THE DOCUMENTS REQUIRED BY SECTION 708.503, FLORIDA STATUTES, TO BE FURNISHED BY A SELLER TO A BUYER OR LEASE.